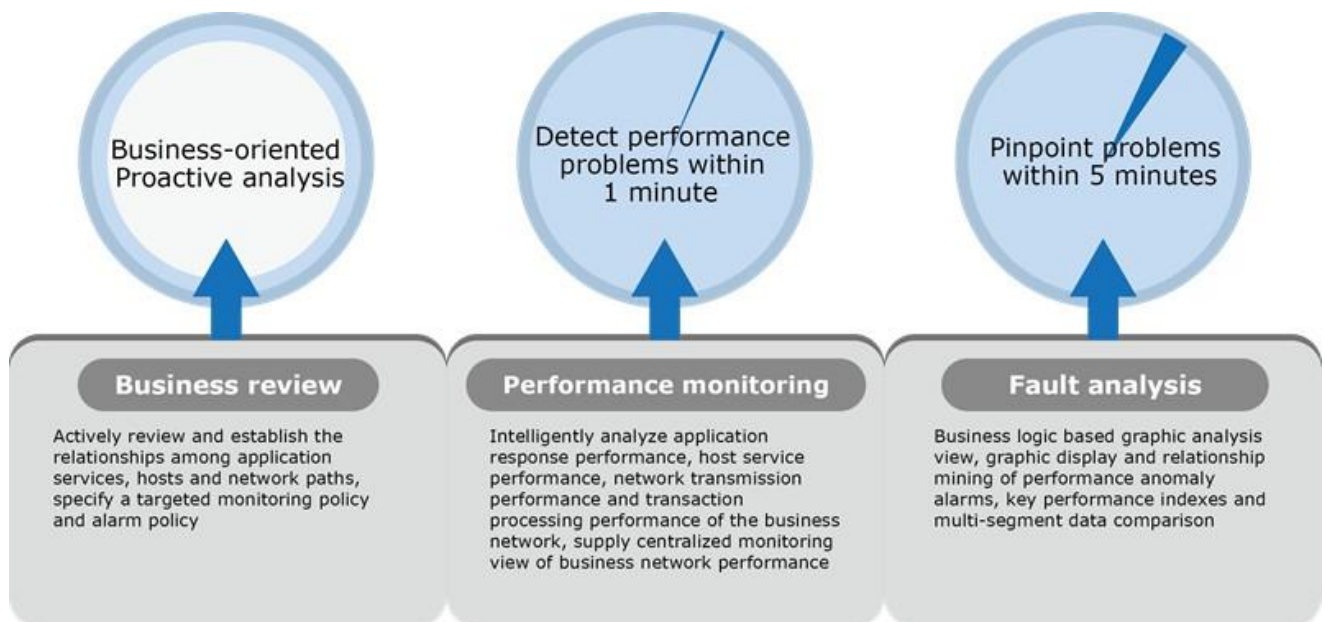


# Colasoft UPM

## Unified Performance Management Solution

## Datasheet

Colasoft Unified Performance Management (UPM) system is a business-oriented unified performance management solution. It is capable of monitoring service quality of all respects of a business network and quickly detecting and pinpointing problems affecting performance and stability of key business. Colasoft UPM aims to maximize business network management efficiency and network fault troubleshooting capability by providing business-centered network supporting environment review, real-time performance monitoring and quick detecting of network fault. Colasoft UPM collects all real-time analysis data from Colasoft nChronos which are deployed separately at the critical network links and provides operation staff with vivid and graphic working status of every node in the business network.



### Technical Advantages

- Intelligently analyze business network and independently capture data, not affecting other systems
- Provide comprehensive performance analysis parameters for network transmission, host service, application response and transaction processing and provide centralized monitor and analysis capability
- Reduce time for analyzing network anomalies and proactively identify potential issues
- Graphically display the various indexes for complicated business network and make network maintenance easier for operational staff

## Values and Benefits

### Improve the capacity of dealing with complex business systems

The performance analysis capability of Colasoft UPM is very powerful. When network performance is degrading, Colasoft UPM is capable of detecting the problem at the very first time, quickly pinpointing the source of the problem, and focusing on analysis on the source machine. In this way, Colasoft UPM can prevent the degradation of business network performance so as to help operations staff manage their increasing network and application requirements.

### Reduce time of troubleshooting network faults

Colasoft UPM provides business-based performance monitoring capacity. It is capable of evaluating the effect of every application which supports the business system and network performance degradation to business. By quickly locating the source of the problem, it helps operations staff to reduce time of troubleshooting network faults.

### Reduce human resource cost

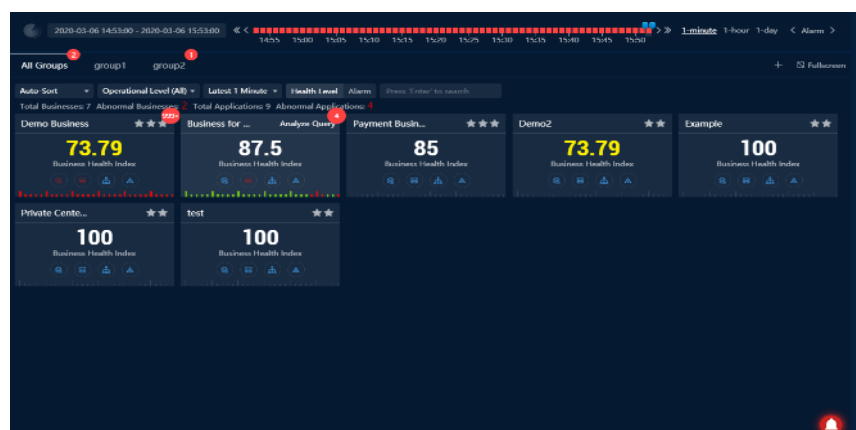
Colasoft UPM provides centralized business-based performance management. Different from traditional isolated monitoring mode, Colasoft UPM offers real-time monitoring and analyzing of the business network as well as related applications. With the automatic and intelligent solution, the human resource costs can be further reduced.



## Features

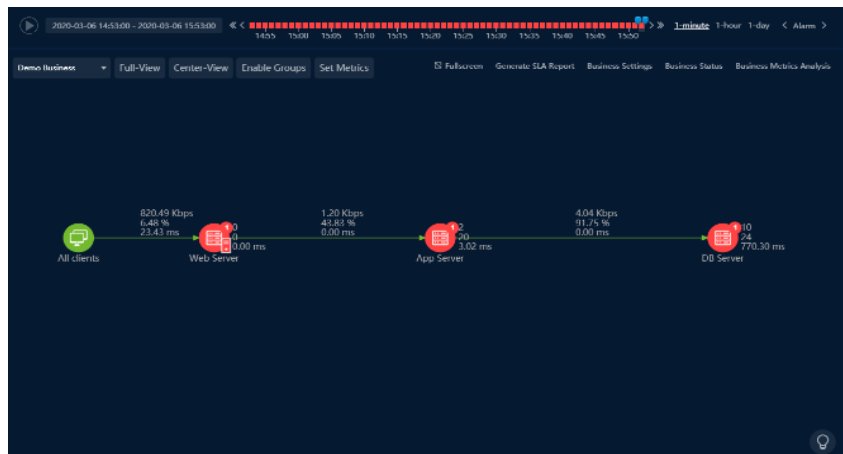
### Visualized business running status

Colasoft UPM enhances network management mode from physical network-oriented to business network-oriented, enables users to make proactive network analysis strategy based on business system. It visually shows the overall running state of the business, enabling operators to keep track of the running quality of each business. The business status page is provided to display business running performance, business status, the number of related alarms, etc.



## Quick analysis of business performance problem

Colasoft UPM displays the running status of all the applications which form a business with business logic diagrams. Users can review the application services, hosts and network paths supporting business system from this graph. Graphically displaying the key performance metrics and working status of the business help users quickly locate the key link which causes business system anomaly.



## Comprehensive application metric query

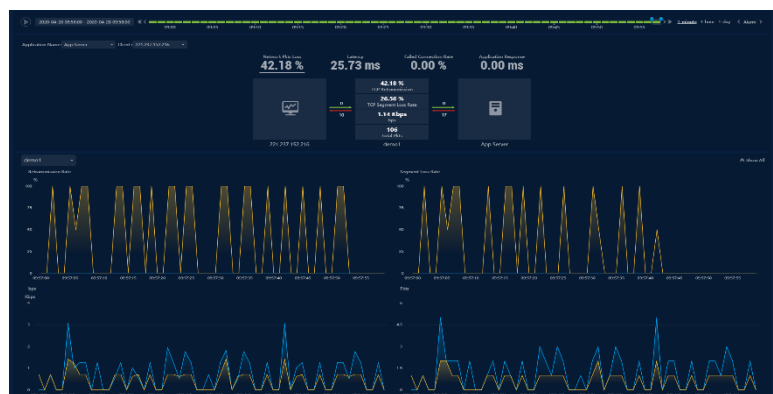
Colasoft UPM provides around 100+ metrics related to business and application. It also supports comparison analysis of the metric at the same period in history, displaying with abundant graphs. Users can learn and analyze the running status and fault reason of the application service in an all-round way through comprehensive metric query.

## Original packets retrieval and download

Colasoft UPM supports download of original packets. Users can retrieve and download application packets of any time period stored at the frontend devices related to the business, so as to provide direct data evidence to solve complex business fault.

## Multi-segment analysis

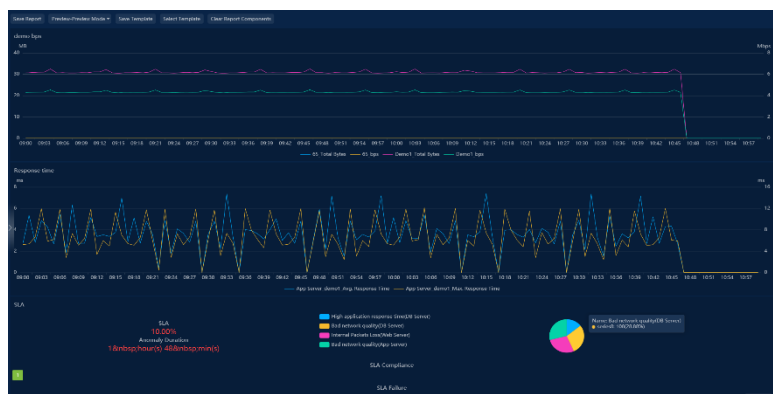
Colasoft UPM supports correlated analysis of data of one application collected at different points, so as to find the problems of segment loss, retransmission and time delay of the application to help users locate the network node causing the low quality of the application service.



## Powerful reporting capabilities

Colasoft UPM provides report feature, helping decision-maker to master the historical running status of all key metrics which form the business, links, transactions, network, etc.

The reports can be scheduled as daily/ weekly/ monthly report.



## Link traffic monitor and analysis

Colasoft UPM Center is capable of centrally monitoring the links traffic, providing real-time statistics and charts. And, UPM is able to automatically generate a baseline according to history traffic.

Besides the basic traffic analysis, UPM provides comparison analysis and trend analysis. You can choose a time period and compare its traffic to specified history traffic. Furthermore, traffic forecast is available to estimate the network traffic in next days. It can even aggregate the traffic from multiple probes for further analysis.



## Real-time alarms

Colasoft UPM provides several alarm types: business alarm, application alarm, probe traffic alarm. All the alarms can be defined by users, and UPM system provides lots of alarm trigger conditions, which is convenient for operational staff to customize alerts based on their business and network environment. Besides, UPM provides intelligent alarms and performance alarms, which will be triggered based on UPM built-in alarm conditions. Alarm statistical charts and lists are available to display all alarm logs.

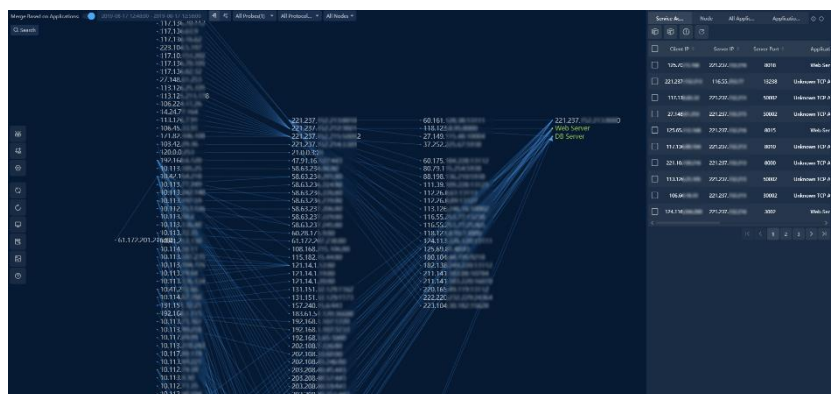
## Network performance monitor and analysis

Colasoft UPM supports network monitoring and analysis. Users can monitor network performance by customizing several charts, such as alarm log chart, metric table chart, etc. Also, users can also analyze network segment corresponding metrics information to clearly know the network status.

## Intelligently display network communication and application relationships

Once the network traffic is captured and analyzed, UPM Center can draw a network communication diagram based on the traffic. You can add new nodes and probes onto the diagram, and even add network devices such as switches, routers to the communication path among the nodes.

The network segments are automatically defined, and you can define new network segments. UPM Center is also able to draw a diagram to show the application visit relationships among the nodes. You can define applications based on the visit relationships, which is very convenient.



## About Colasoft



Colasoft has dedicated itself to the development of innovative packet analysis and network performance management solutions since 2001. Besides offering real-time and retrospective network analysis software to organizations of all sizes, we are providing customized network and application performance management solutions to enterprises worldwide. Colasoft is a fast-growing company with more than half million users in over 110 countries. Featured customers include IBM, Dell, Philips, Emerson, and other industry leading companies. A more detailed customer list can be viewed at: <http://www.colasoft.com/company/customer.php>.