

# Colasoft Capsa 6.x

## Datasheet

### Capsa Enterprise enables you to:

Get information about complex, enterprise networks;

Provide 24/7 surveillance over your networks;

Enhance network security;

Discover performance bottlenecks, thus improve network performance;

Speed up your existing network problem detection and resolution process

Increase ROI on existing networks

Save time dealing with urgent network issues

Reduce loss caused by network downtime and service degradation

Reduce IT spending

### Capsa Overview

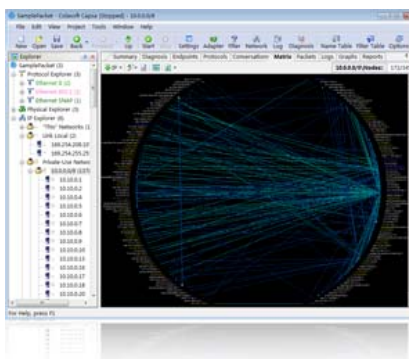


Trusted by both Fortune 500 as well as small and medium-sized companies as their management solution, Capsa Enterprise offers an easy, yet powerful way for network monitoring, analysis and troubleshooting. By providing vivid graphs and information-rich statistics via a well-designed GUI, Capsa Enterprise allows IT administrators to identify, diagnose, and solve network problems in real time, monitor user activities on their networks, and ensure their network's communication assets are safe.

### With Capsa Enterprise, IT professionals are able to:

- Capture and save data transmitted over local networks and conduct both real-time and post-event analysis
- Identify and analyze more than 300 network protocols, as well as network applications based on the protocols
- Monitor network bandwidth and usage by capturing data packets transmitted over the network and providing summary and decoding information about these packets
- View network statistics at a single glance, allowing easy capture and interpretation of network utilization data
- Monitor internet, email and instant messaging traffic, helping keep employee productivity to a maximum
- Diagnose and repair network problems in seconds by detecting and locating suspicious hosts
- Map out the details, including traffic, IP address, and MAC, of each host on the network, allowing for easy identification of each host and the traffic that passes through each
- Visualize the entire network in an ellipse that shows the connections and traffic between each host

### Easy-to-navigate UI



Network Analysis is a topic about methodology which impresses people with a complex-tech-involved face at the first glance. And actually it is. But it can be easy and efficient for those who want it merely for problem solving rather than researches.

*“Capsa Enterprise is an enormous, well-engineered, technical and highly professional product that provides almost everything you could want for network and protocol analysis and reporting at a reasonable price.”*  
-NetworkWorld.com



*“Having the right tools on the network is critical to a network administrator's success. In this TechRepublic blog post, IT Jedi Rick Vanover takes a look at the Colasoft Capsa tool for network analytics.”*



*“As computers become more ingrained in the daily operations of most companies, it seems that running into problems occurs more frequently and with greater consequences. When it comes to computer networks, the key issues are security, speed, and reliability. A newly improved network analyzer called Capsa 6.9 R2, developed by Colasoft Inc., can help companies monitor, detect, and troubleshoot network problems...”*



Capsa Enterprise gives two glues to track network issues:

Nodes → statistic about node → diagnosis on per node basis → protocol distributed on the node → Conversation the node involves → traffic the node send/received → other info against the node.

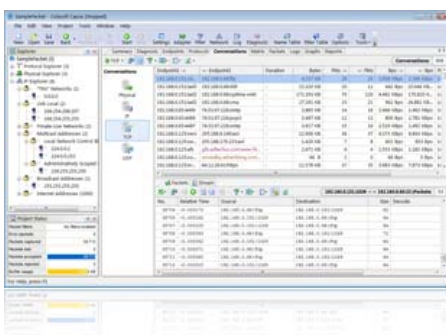
Protocols → statistic about protocol → diagnosis on per protocol basis → node send/received this protocol → Conversation the protocol involves → traffic type belongs to the protocol → other info against the protocol.

This is simple and clear. Based on our understanding, network problem is not exactly a real problem in “network”, which because “network” is not a physical existed object but a logical concept. While there are problems, and you drilldown where it exactly is, in the final analysis, they always appear as individual fault on devices (misconfiguration/device error) – which is the concept we called NODE based, or, maybe every devices is working fine individually but they just don't cooperate, cannot work out together (deployment issue/design problem), they don't agree with each other – which is a PROTOCOL problem basically.

They are the fundamental idea of navigating users. We've integrated the idea and many powerful features in to the designation, and made Capsa to offer the spectrum unique component Explorer Bar which gives clues to connect large number of information, and avoid Information Silo.

## Quick Drilldown Analysis

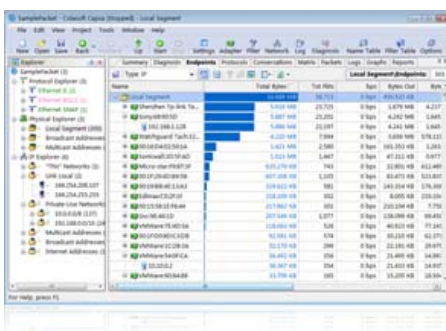
Even tracking with the line of clues, excluded lots of irrelevant elements, the information is still too huge that may submerge useful ones and make user feel lost. How to dwindle in info scope step by step, exclude unrelated info, keep useful ones and zoom out the key point, is now becoming the most significant task to make network analysis meaningful and solution oriented.



from Capsa Enterprise.

The Capsa Enterprise endows users with ability to organize information in different types of connection (IP pairs/MAC pairs/Protocol/conversations). It is now possible to address other objects by attributes in common in Capsa: just use the auto Locate Explore Node, address the common point in the Explorer bar by ways of either NODE concept or PROTOCOL we mentioned above. Track upon the clue string and strip the onionskin step by step, this is the drilldown procedure you can have

## Easy-to-interpret Graphs and Reports

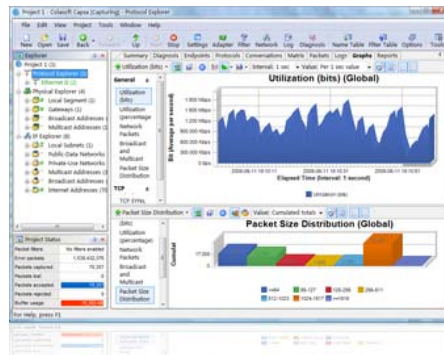


Locate the right information is crucial to most Network analyze tool users with professional understanding of network knowledge, while translate the information into a more readable and understandable work may happens to be the narrower but more needed case when facing the non-technical users.

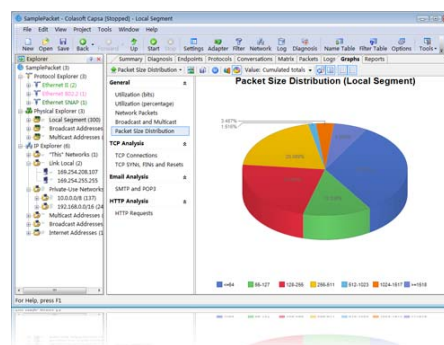
*“Chances are, if you're in charge of supporting a network of any size, you'll need to look at the actual packets that are passing back and forth across that network. Whether it's to see whether a specific machine is sending or receiving packets as it should, or you want to see the contents of the packets themselves, ...”*

**CrunchGear**

*“Wherever and whenever a networking issue arises I am always able to have my Colasoft Capsa on-hand to diagnose, and resolve, complex issues.”*

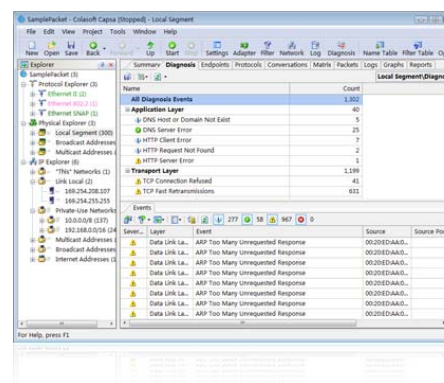


It is vital to control any possibility of problem occurrence in an industry network environment, however the administrator easily ignore the possible issues but merely keep eyes on the problem already happened. There are easy-to-interpret Graphs and report in Capsa Enterprise. These pieces of works actively “push” the crucial information to administrators by ways of Graphs/Report which can give them a pre-alarm even by simply a glance at them, so they wouldn't miss a hidden threat just because it is among thousands of messages in form of number.



## Expert Diagnosis

At the ancient network era when Ethernet arisen at the beginning, diagnosis can be easily handled because the data traffic is comparatively very small to the modem world one.



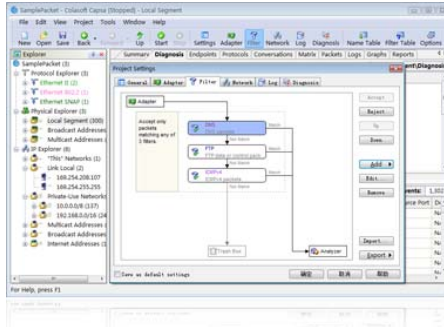
Nowadays, network analysis could be really a harsh task upon with the bandwidth-demanded and traffic-increasing network. Manually compare data context and packet header to find the problem seems a mission impossible because the Intranet grow up rapidly that traffic data is innumerable as Gigabit is now generally desktop accessed.

## Real-time Troubleshooting

In fact, most network issue goes with symptoms which are predictable. Capsa Enterprise has the module that compares, analyzes the symptoms automatically and summarizes them. This is much more than only an information collector but ulteriorly reorganizes and simply analyzes them. This is time saving and more effective for users to find symptoms and go deeper to the fundamental cause based on the diagnosis events.

The drawbacks of post analysis are obvious: problem occurs, but hidden in upper level – post analysis discover them – the symptom slip away when turns back to deal with it. Then why post analysis? As we know post analysis is time and resource consuming, and bring latency when troubleshooting. ALL analyze module in Capsa Enterprise collect and analyze the traffic in real time, which means no delay involved. The optimized software data architecture endows it a real time capability to on-the-fly keep eyes on network and analyze it simultaneously.

## Easy-to-set, Visualized Filters



Filter is another way to exclude excessive information.

Traditional Network Analyze tool gives only logical command expression or coding type filter. It could be flexible into byte accuracy but very annoying because of the extremely ignorable filter direction issue, and also because the complexity of expression grows higher rapidly upon with the flexibility.

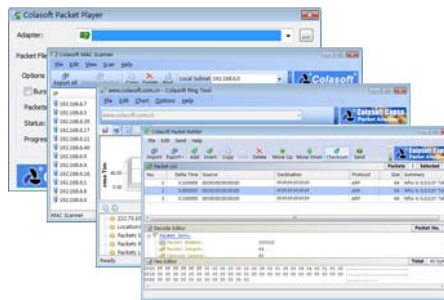
Capsa Enterprise gives a visualized filter that users can view the status of filters applied to the project. It reduced the possibility of misconfigured filter of misapplied direction. And the logic in a visualized way make sense more than only a command line over there.

Also there are predefined filters that junior users can easily applied to the capture project and also optional customizable filter that very advanced & flexible for senior users.

## Useful and Valuable Built-in Tools

The built-in tools are simple but powerful. Similar to a scalpel, very sharp, but too sharp that could also be dangerous.

Some of them will allow user to manipulate the traffic as they like, and some will be able to do a total scan over the entire LAN or initiate a connectivity test to one or multiple specific Point throughout the network.



When using the built-in tools like packet builder, or packet player to manipulate the network traffic, a decent understanding of the current environment and professional knowledge of how TCP/IP over different media works is very important. So, it is ok to see the network by only scan or test, but don't try to manipulate the traffic unless you are an expert.

## Featured Customers



## About Colasoft:

Ever since 2001, Colasoft has been an innovative provider of all-in-one and easy-to-use software solutions for users to **monitor** network activities, **analyze** network performance, enhance network **security**, and **troubleshoot** network problems. Currently, more than 5000 customers in over 80 countries trust the company's flagship product, Capsa Network Analyzer, as their network monitoring and troubleshooting solution. Featured customers include Alcatel, Airbus, Dell, Ericsson, IBM, Intel, and Pepsi. Our mission is to "**Maximize Network**

**Value**" through providing affordable software that ensures customer's network is closely monitored and in-time troubleshooted before any business loss is caused. Learn more about Colasoft and its solutions, visit <http://www.colasoft.com/>.

